

# Manhattan Community Services

## 曼哈頓社區服務


Chinese-American Planning Council, Inc.  
Manhattan Community Center  
華人策劃協會曼哈頓社區服務中心  
165 Eldridge Street, New York, NY 10002  
曼哈頓曼烈治街165號·紐約·紐約10002  
www.cpc-nyc.org

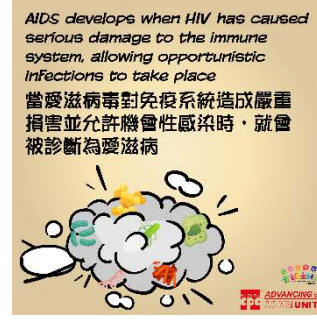
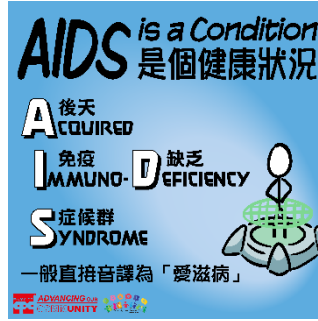


## November 2020 Newsletter

### Greetings from CPC Manhattan Community Services!

Since New York State went on PAUSE in mid-March, CPC Manhattan Community Center is temporarily closed, but our commitment to the community members remains the same. We continue to serve and support our members remotely through telecommunication, video conferencing, online training, and sharing resources and up-to-date information.

- Twice-daily news briefs are shared on AM1480/AM1380 in Cantonese and Mandarin to ensure our community members have the translations of critical information in real time. CPC also has a WeChat account for distribution of information, updates, and CPC workshops and trainings. Please engage with us by scanning the QR Code.  

- With the steady rise of COVID-19 cases, Asian Family Services (AFS) is seeing a rise in referral cases of domestic violence and mental health issue from the Administration for Children's Services. AFS follows up on these referrals through teleconference, in-person home visits, and works together with other departments to address the needs of these families. AFS provides multiple levels of services to community members through supportive counseling, parenting skills training, and crisis intervention to keep families intact and prevent placement of children into the foster care system.
- Multi-Social Services (MSS) provides assistance to community members on applying for housing grants, medical assistance counseling, SNAP online applications, and unemployment insurance enrollment through phone calls, WeChat, and in-person services. In collaboration with the legal counsel, MSS held a successful remote Immigration Clinic for community members to call in and receive remote application assistance and free consultations on their immigration issues.
- Community Health Services (CHS) continue to do monthly check-in on the physical and mental well-being of the community members that are living with HIV/AIDS by tele-visit and address their needs. HIV stigma is a negative attitudes and beliefs about people living with HIV, often labeled these people as socially unacceptable. To correct these misconceptions and help others to understand the different between HIV and AIDS and HIV/AIDS stigma, CHS created a series of educational posters and shared them with community members through Facebook and Instagram. To view these posters, please visit <https://www.facebook.com/CPCCHS>



- The ECLW Family Child Care (FCC) Network continued to assist families who need subsidized child care and connect them with FCC Network-affiliated providers. Additionally, the FCC Education Team will offer a virtual whole-day Profession Learning on December 30, 2020 on Development Screening Tools and Teaching Strategies. The Education Team conducts two monthly coaching visits to affiliated providers' programs. During the coaching visits, the Education Specialist provides instructional support to help providers plan and implement "Let's Play! A Relationship Based Family Child Care Curriculum," a mixed-aged curriculum created by the Department of Education and Bank Street to support children's development through responsive caregiving and play-based learning in family child care programs. The Education Specialist ensures the affiliated providers' practice are aligned with the Family Child Care Early Childhood-Framework for Quality.

**CPC Family Child Care Networks**

- 130 Home-based Child Care Providers (multi-lingual) throughout Brooklyn, Manhattan, and Queens
- Extended Day / Extended Year of Care — 10 hours / 260 days
- Infant & Toddler Care — 10 hours per day and 260 school days
- Regular 3K (born in 2017) — 6.2 hours per day and 180 school days
- Extended 3K (born in 2017) — 10 hours per day and 260 school days
- Small Caregiver-to-Child Ratios
- More Individual Attention and Care

Eligible based on family income. Regulated by the NYC Department of Education.

**Hello Parents**  
of Children Ages  
6 Weeks – 3 Years Old.

CPC Family Child Care (FCC) Networks assist families in applying for subsidized child care and help parents find high-quality in-network family child care providers.

CALL US AT  
(914) 498-3997 English  
(914) 498-4022 Chinese  
(914) 498-3767 Spanish

CONTACT US TODAY!  
VISIT US ONLINE AT  
<https://childcarecpc.org/fcc-network/>

**華人策劃協會  
家庭托兒聯繫網**

- 分佈於布魯克林、曼哈頓和皇后區的130個聯繫網內的家庭托兒人員
- 課前或課後托兒/延長學年的托兒-每天10小時/260天
- 照顧嬰幼兒-每天10小時, 260個教學日
- 常規的3歲-幼稚園(2017年出生的兒童)-每天6.2小時, 180個教學日
- 延長的3歲-幼稚園(2017年出生的兒童)-每天10小時, 260個教學日
- 更低的照顧人員與兒童的比例
- 更多的個人關注與照顧

申請資格取決於家庭收入, 紐約市教育局監管。

**6週至3歲兒童的  
家長敬請注意:**

策劃會的家庭托兒聯繫網協助家庭申請政府資助的托兒, 並幫助家長尋找聯繫網內優質的家庭托兒人員。

請聯繫我們  
(914) 498-3997 英語專線  
(914) 498-4022 中文專線  
(914) 498-3767 西班牙語專線

今天就行動!  
請訪問網站:  
<https://childcarecpc.org/fcc-network/>

**Redes de cuidado infantil familiar de CPC**

- 130 proveedores de cuidado infantil a domicilio (en varios idiomas) en Brooklyn, Manhattan y Queens
- Día extendido / Año extendido de cuidado: 10 horas al día / 260 días
- Cuidado de bebés y niños pequeños: 10 horas por día y 260 días escolares
- 3K regular (nacidos en 2017) - 6.2 horas por día y 180 días escolares
- 3K extendido (nacido en 2017) - 10 horas por día y 260 días escolares
- Pequeños grupos de niños por cada cuidador
- Más atención y cuidado individual

Eligibilidad basada en los ingresos familiares. Regulado por el Departamento de Educación de la Ciudad de Nueva York.

**Hola, Padres**  
de Niños de 6 Semanas a 3 Años:

Las redes de cuidado infantil familiar ayudan a las familias a solicitar cuidado infantil subsidiado y ayudan a los padres a encontrar proveedores de cuidado infantil familiar de alta calidad dentro de la red.

Llámenos al  
(914) 498-3997 Inglés  
(914) 498-4022 Chino  
(914) 498-3767 Español

¡Póngase en contacto con nosotros hoy!  
Visitenos en línea en <https://childcarecpc.org/fcc-network/>

- Funded by Federal CARES Act, \$20 million is allocated to support child care services for children of essential workers, known as CARES 3 Scholarship Program for Essential Workers. Early Childhood Learning & Wellness Services (ECLW), along with other New York City Child Care Resource and Referral Consortium partner agencies, are tasked to manage and process the CARES 3 Scholarship. From the date when the CARES 3 applications are online and available up to November 30, over 7,500 parent applications came in and more than 2,500 child care programs filled out the provider information profile. ECLW also continue to assist child care providers in New York Forward Child Care Expansion Incentive and Temporary Operating Assistance Grants (CARES 2) reimbursement process. 2,020 New York City child care programs are approved for CARES 2.

- ECLW is hiring a full-time Korean Child Care Project Coordinator, funded by the Korean American Community Foundation. Interested candidates, please send a resume and cover letter to [schin@cpc-nyc.org](mailto:schin@cpc-nyc.org)

**About CPC**

Chinese-American Planning Council (CPC) is the nation’s largest Asian American social services organization. Founded in 1965, CPC promotes the social and economic empowerment of Chinese American, immigrant, and low-income communities of New York City.

CPC Central Administration 150 Elizabeth Street New York, NY 10012 212-941-0920	Manhattan Community Center 165 Eldridge Street New York, NY 10002 212-941-0030	Brooklyn Community Center 4101 8 <sup>th</sup> Avenue, 4 <sup>th</sup> Floor Brooklyn, NY 11232 718-492-0409	Queens Community Center 133-14 41 <sup>st</sup> Avenue Flushing, NY 11355 718-358-8899
--	---	---	---

For more information and updates, please visit [www.cpc-nyc.org](http://www.cpc-nyc.org)



CPC WeChat QR Code